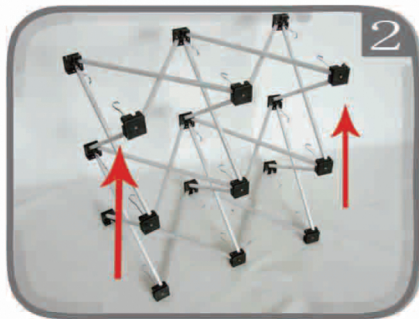


# Pop Up Counter Installation Instructions



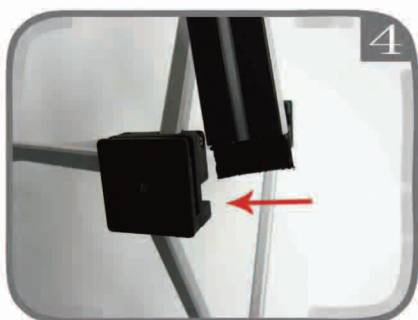
Remove pop up frame from carry bag



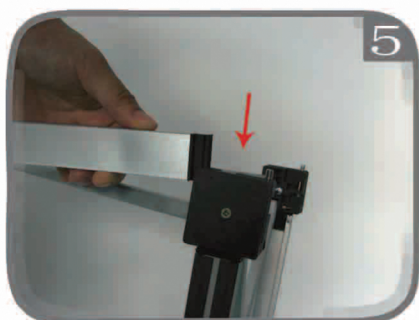
Erect structure ensuring table top locating studs are upper most



Fasten with hooks on both sides



Affix horizontal magnetic rails (curved) of structure.



Affix vertical magnetic rails (straight).



The assembled structure is now ready to accept the shelves.



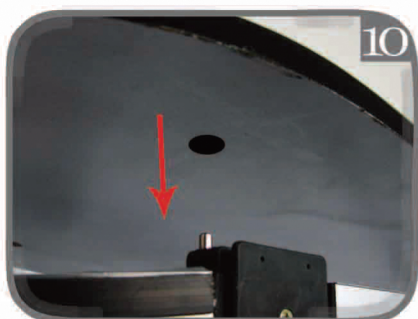
Insert the middle shelves. Slightly angle the shelves to assist location.



Unroll the graphic and locate the magnetic buttons into the top of the structure, ensuring magnetic tape aligns to the vertical rails.



Affix both ends of the graphic to the rear of the system, aligning the magnetic buttons and tape.



Open up the laminated table top and lower onto the four locating studs.



Your counter is now ready for all types of promotional work. To dismantle the pop up counter, reverse the assembly procedure. Ensure graphic is rolled - image side facing outwards.



**Pop Up Counter**