

Measuring Aluminium and PVC Frames

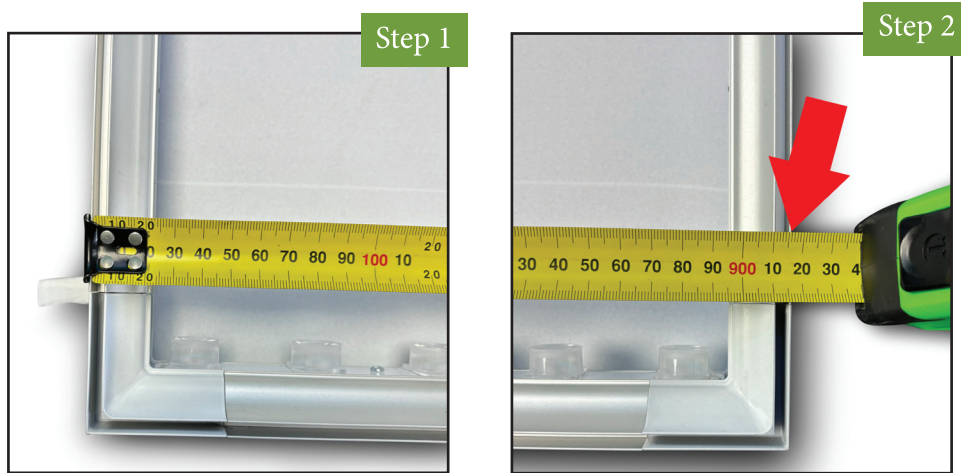
Make sure the tape measure is straight when measuring

Measure from the **OUTER EDGE** of the frame

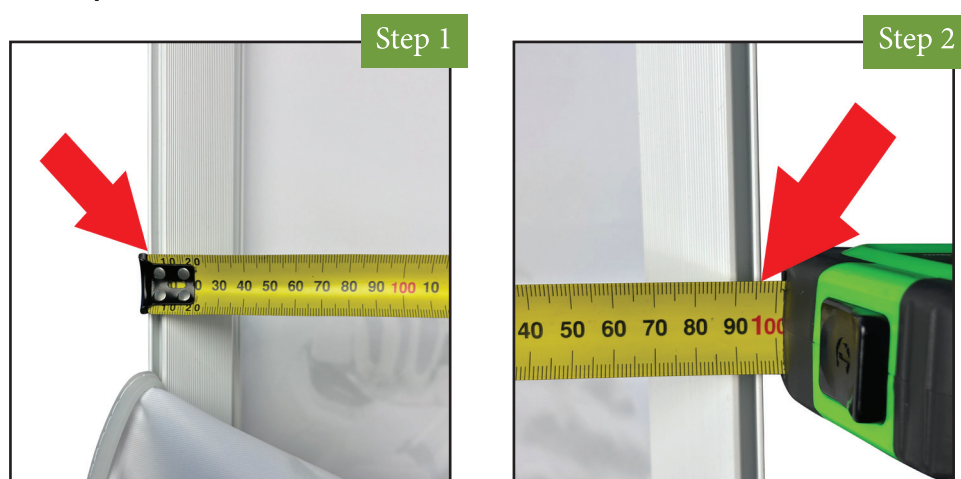
Read the number where the outside frame edge ends

Supply width and then height of the frame.

Aluminium Frames



PVC/Plastic Frames



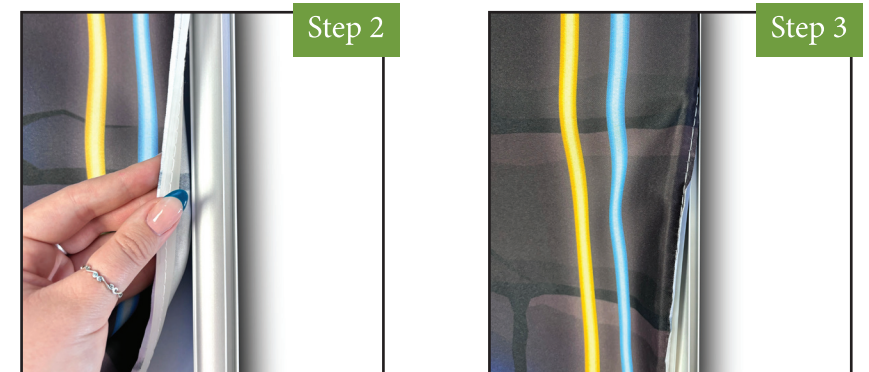
SEG MEASUREMENT GUIDELINE

Aluminium and PVC Frames

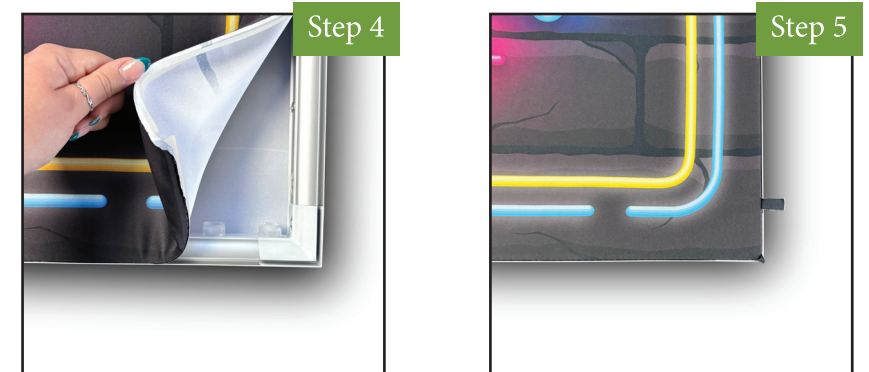
**** When ordering, please specify if your frame is not aluminium.****

HOW TO MAKE SURE YOUR PRINT FITS

Step 1 When fitting prints - make sure you start at the corners.



Silicon edge has a singular straight stitch on the edge of the fabric that easily folds into the grooves of the frame with the 10mm thick SEG.



SEG edges should be easy to push into the frame and should **NOT** need to be overlapped.

Fabric should sit flush/flat to the frame and should **NOT** be loose or have creasing / gathering of fabric on the edges.